

# Quick Start Guide

## D-Link DG-102S iPhone Device



**Please Note:** This guide covers the two most common setups. Please visit [www.comwave.net/setup](http://www.comwave.net/setup) for advanced network configurations.

### Package Contents



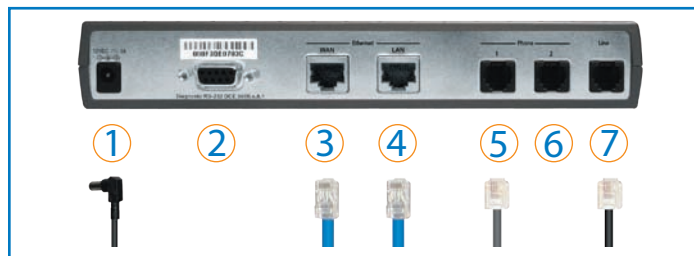
① D-Link DG-102S iPhone Device

② Power Adapter

③ Ethernet Cable

④ Serial Cable

### iPhone Connections



① Power Connection

② Serial Cable

Used only if instructed by Comwave Technical Support to assist with troubleshooting.

③ WAN

Used to connect to the High Speed Internet modem or router.

④ LAN

Used to connect to your PC.

⑤ Phone 1

This is phone line 1. A telephone number will be assigned to this port. Used to connect the telephone.

⑥ Phone 2

This is phone line 2. Used to connect a second telephone, if subscribed to two phone lines.

⑦ Life Line

**NOTE:** Dial “#” to activate this port.

Used to:

a) Connect to an existing phone jack to access the building intercom functions in apartment buildings.

b) Connect to a back-up non-VoIP land line in the event of Internet loss, if a back-up line is available.

## Start Here



**Important:** You must register your account and activate your iPhone online prior to set-up.

1

Please go to [www.comwave.net/register](http://www.comwave.net/register) and log in with your Customer ID and the contact telephone number you provided to Comwave upon ordering the iPhone.

2

Once you have registered, go to [www.comwave.net/myaccount](http://www.comwave.net/myaccount) and log in with your new user name and password. Click on the “Activate iPhone” link in the left menu and follow the instructions.

3

Continue below with set-up instructions.

If your network looks like this...



High Speed Modem

Your Computer

If your network looks like this...

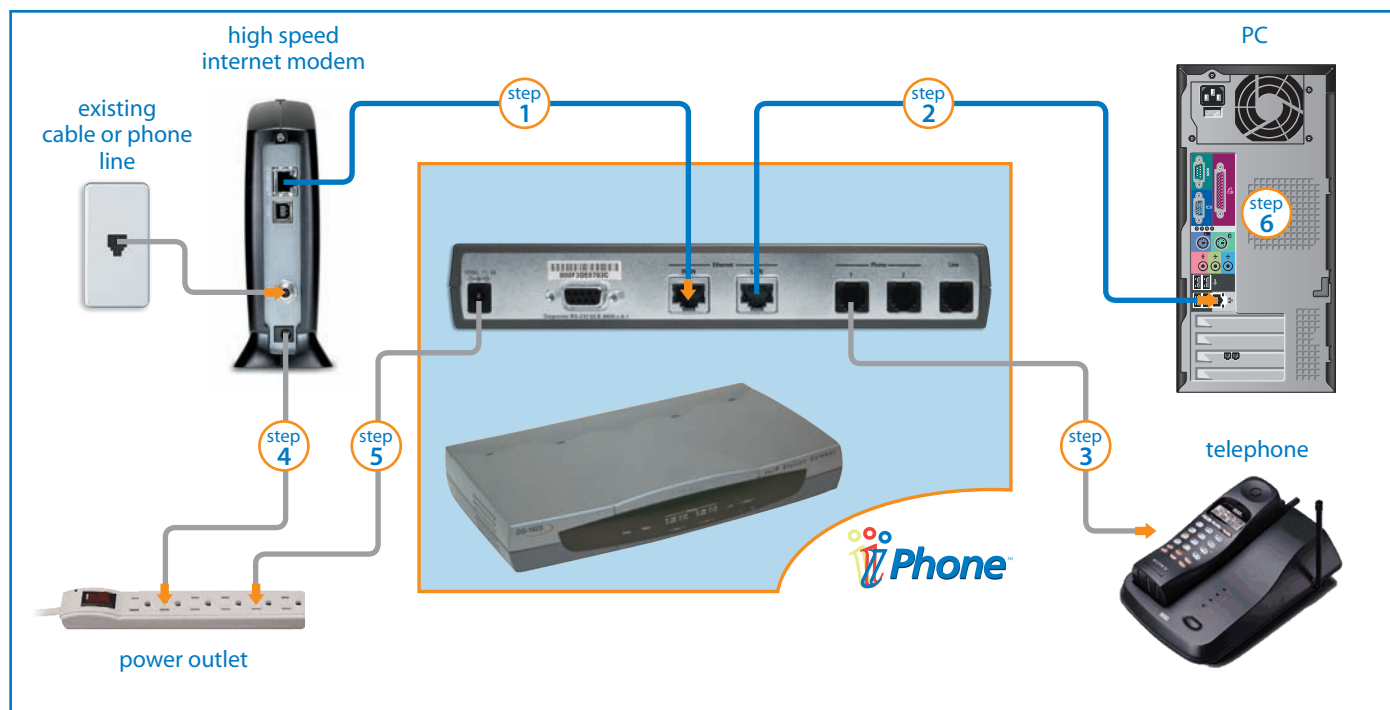


High Speed Modem

Router

Your Computer

## Typical Installation (No Existing Router)



To begin installation, turn off your computer and disconnect the power adapter to your high speed modem.

- step 1** Connect an Ethernet cable from the high speed modem to the **WAN** port of the iPhone
  - step 2** Connect an Ethernet cable from the **LAN** port of the iPhone to your computer
  - step 3** Connect your telephone to the **Line 1** of the iPhone
  - step 4** Connect the high speed modem to the power outlet
- Note:** Please wait 2 minutes before continuing to the next step
- step 5** Connect the iPhone to the power outlet
  - step 6** Start your computer

### IF YOU HAVE:

#### CABLE HIGH SPEED INTERNET

- The iPhone Status light will blink until it has successfully connected to the Comwave network. Once the status light becomes solid green, the iPhone is ready for use.



### IF YOU HAVE:

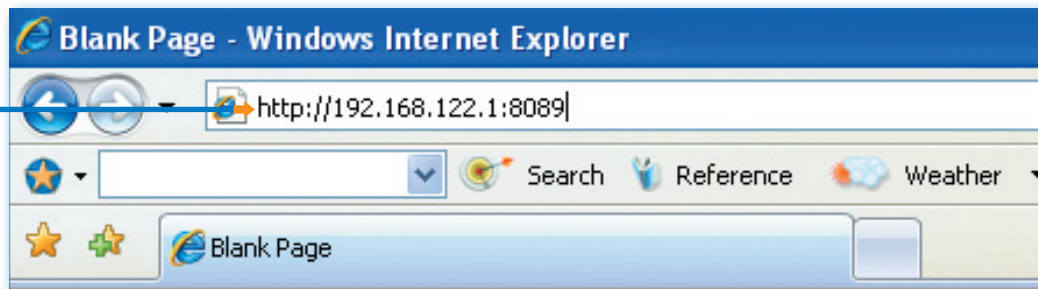
#### DSL HIGH SPEED INTERNET

- Continue to **Page 3**

## Installation with a DSL modem (No Router)

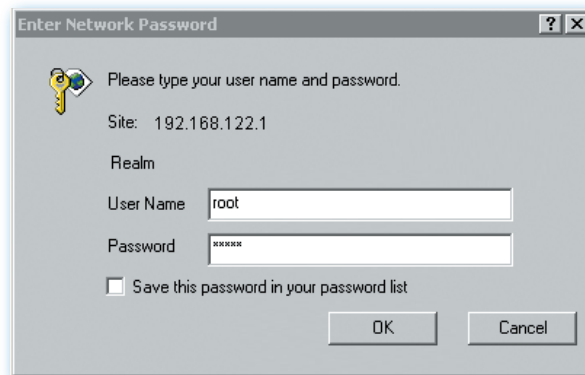
**NOTE:** Some DSL providers issue a user name and password to connect to the internet. Some do not. Please call your Internet Service Provider before continuing to ask them if you require a user name and password (PPPoE).

- 1 Start your computer, open a browser window, type “http://192.168.122.1:8089” into the address field and press the **Enter** key.

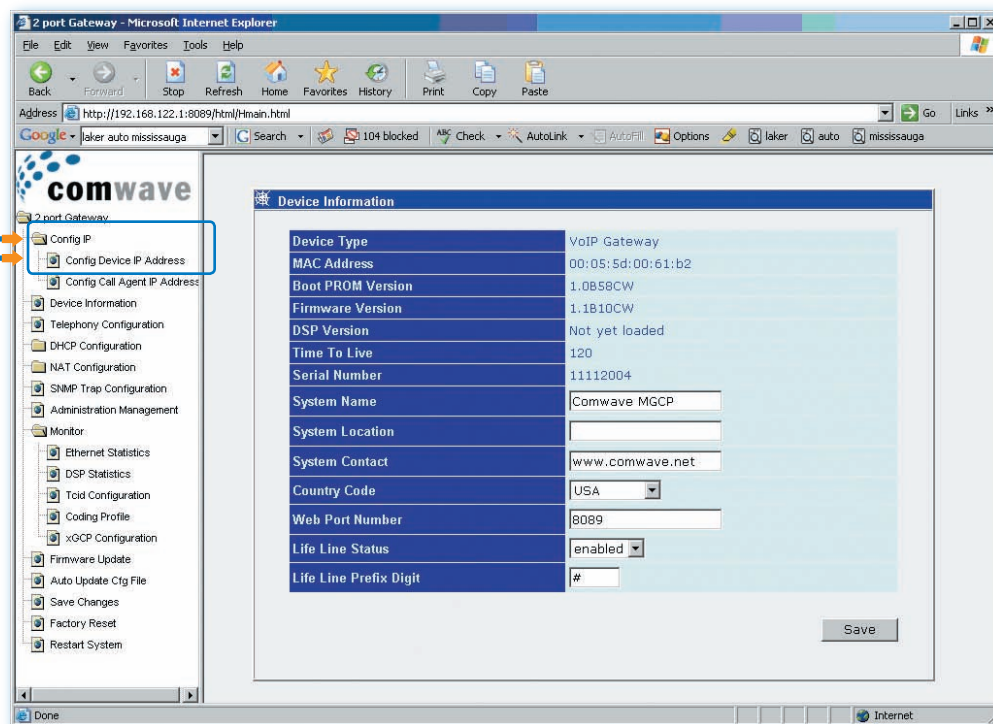


- 2 When prompted, enter the following user name and password and click “OK”.

USER NAME: root  
PASSWORD: admin



- 3 In the left toolbar menu, click on “Config IP” and then select “Config Device IP Address”.



## Installation with a DSL modem (No Router) - Cont'd

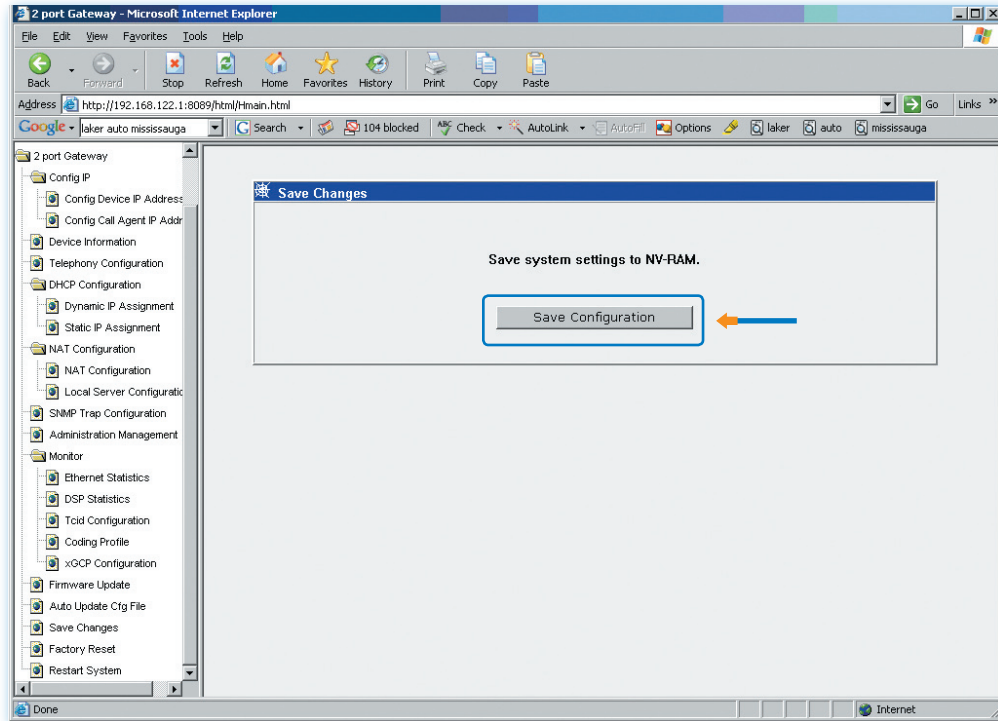
- 4 In the main window (under the section called "PPPoE Settings"), ensure that the dropdown menu is **"enabled"**. Fill in the user name and password provided by your Internet Service Provider. It is important to be very accurate. The user name and password are case sensitive. Any mistakes will prevent your iPhone from getting a dial tone.

The screenshot shows the Comwave web interface for configuring a device. The left sidebar contains a tree view with options like '2 port Gateway', 'Config IP', 'Config Device IP Address', 'Config Call Agent IP Address', 'Device Information', 'Telephony Configuration', 'DHCP Configuration', 'NAT Configuration', 'SNMP Trap Configuration', 'Administration Management', 'Monitor', 'Firmware Update', 'Auto Update Cfg File', 'Save Changes', 'Factory Reset', and 'Restart System'. The main content area is titled 'Configure Device IP Address' and contains several sections: 'Current Settings' (Get IP From: DHCP, IP Address: 10.1.1.138, Subnet Mask: 255.255.255.0, Default Gateway: 10.1.1.1), 'Restart Settings' (Get IP From: DHCP, IP Address: 10.1.1.138, Subnet Mask: 255.255.255.0, Default Gateway: 10.1.1.1, Host Name, MAC Cloning: 00:50:ba:fc:d7:ca), and 'PPPoE Settings' (State: enabled, User Name, Password, IP Address: 10.1.1.138, Status: Down). A 'Save' button is located at the bottom right of the main content area. Blue arrows point to the 'enabled' dropdown, the 'User Name' field, and the 'Password' field in the 'PPPoE Settings' section.

- 5 In the bottom right corner of the main window, click the **"Save"** button. On the left toolbar menu, select **"Save changes"**.

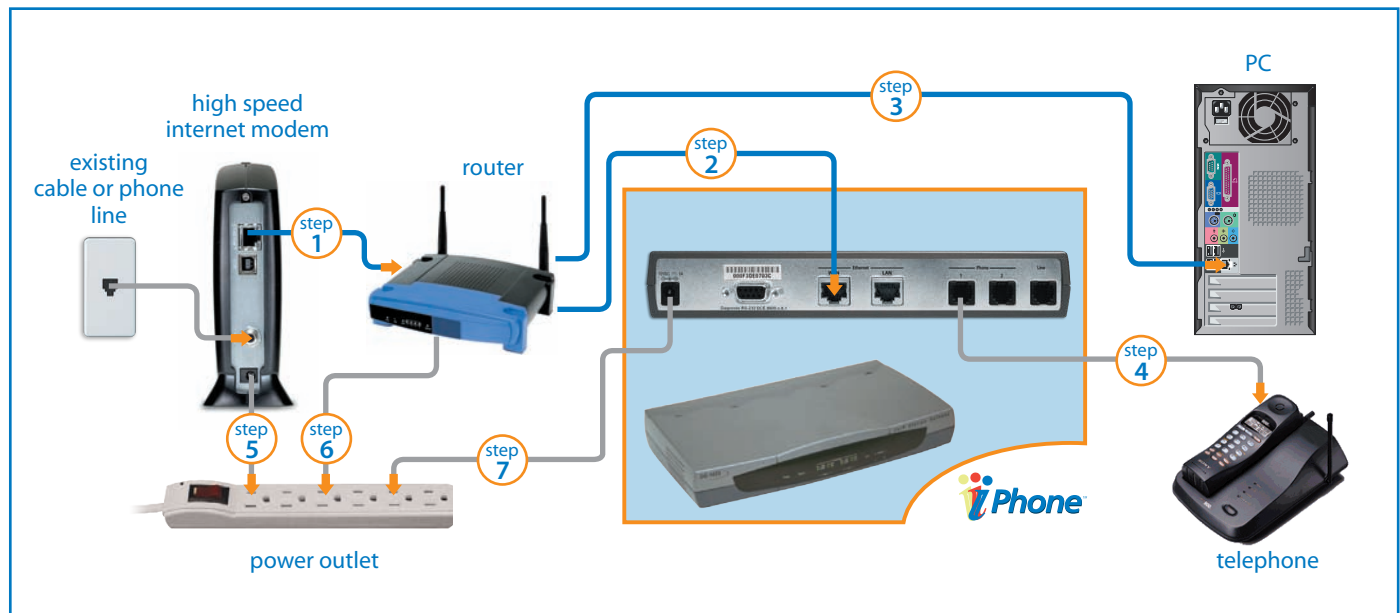
The screenshot shows the same Comwave web interface as before. The 'Save Changes' button in the left sidebar is highlighted with a blue arrow. The 'Save' button in the bottom right corner of the main content area is also highlighted with a blue arrow.

- 6 In the main window, click on the “**Save Configuration**” button.



- 7 This will restart your iPhone. Please wait approximately 2 minutes for service to begin. The iPhone Status light will blink until it has successfully connected to the Comwave network. Once the status light becomes solid green, the iPhone is ready for use.





To begin installation, turn off your computer and disconnect the power adapters to your high speed modem and router.

- step 1** Connect an Ethernet cable from the high speed modem to the **WAN** port of the router.
- step 2** Connect an Ethernet cable from the **LAN** port of the router to the **WAN** port of the iPhone.
- step 3** Connect the Ethernet cable from the **LAN** port of the router to the PC. The PC can also be connected to the available **LAN** port on the iPhone.
- step 4** Connect your telephone to the **Line 1** of the iPhone.
- step 5** Connect the high speed modem to the power outlet.
- Note:** Please wait 2 minutes before continuing to the next step.
- step 6** Connect the router to the power outlet.
- Note:** Please wait 2 minutes before continuing to the next step.
- step 7** Connect the iPhone to the power outlet.

The iPhone Status light will blink until it has successfully connected to the Comwave network. Once the status light becomes solid green, the iPhone is ready for use.







Have more questions?

# Call 1-877-I-PHONE-U

Live and personal Customer Care is available when you need it with our extended hours.

Our Technical Support team is available:

Monday - Friday	8:30 am - 12 am
Saturday	10 am - 6 pm
Sunday	12 am - 6 pm